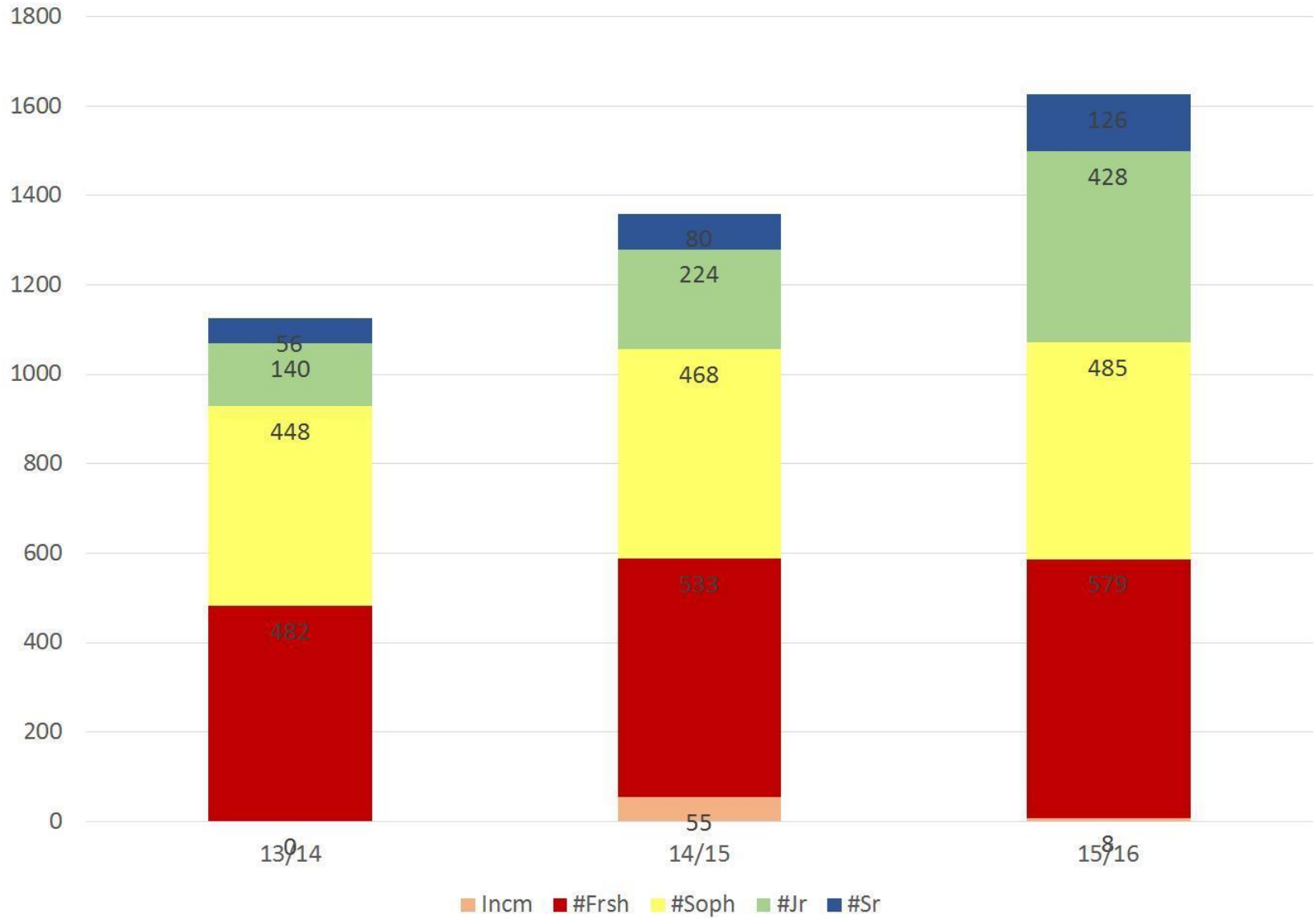
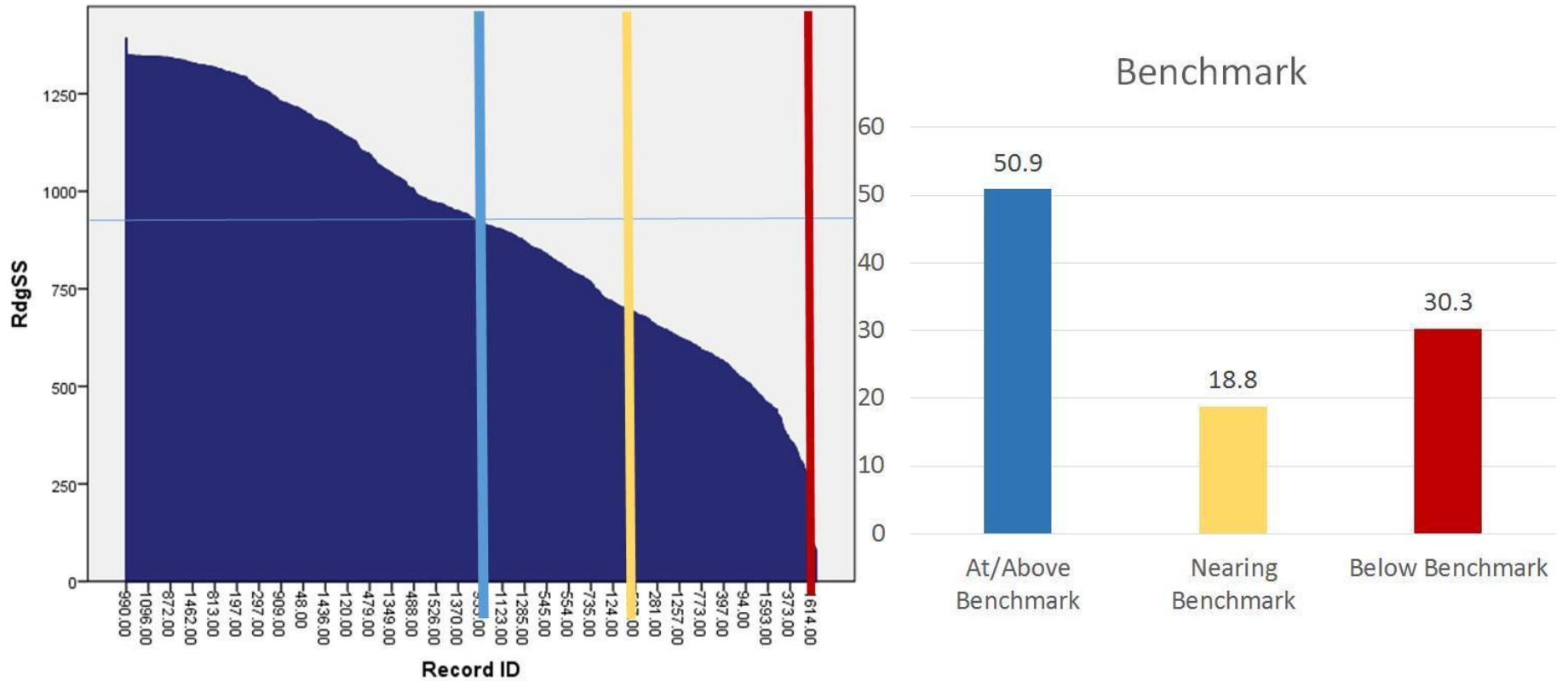


Total Students Tested by School Year and Grade Level



Screening Report – District Benchmark 2015/2016

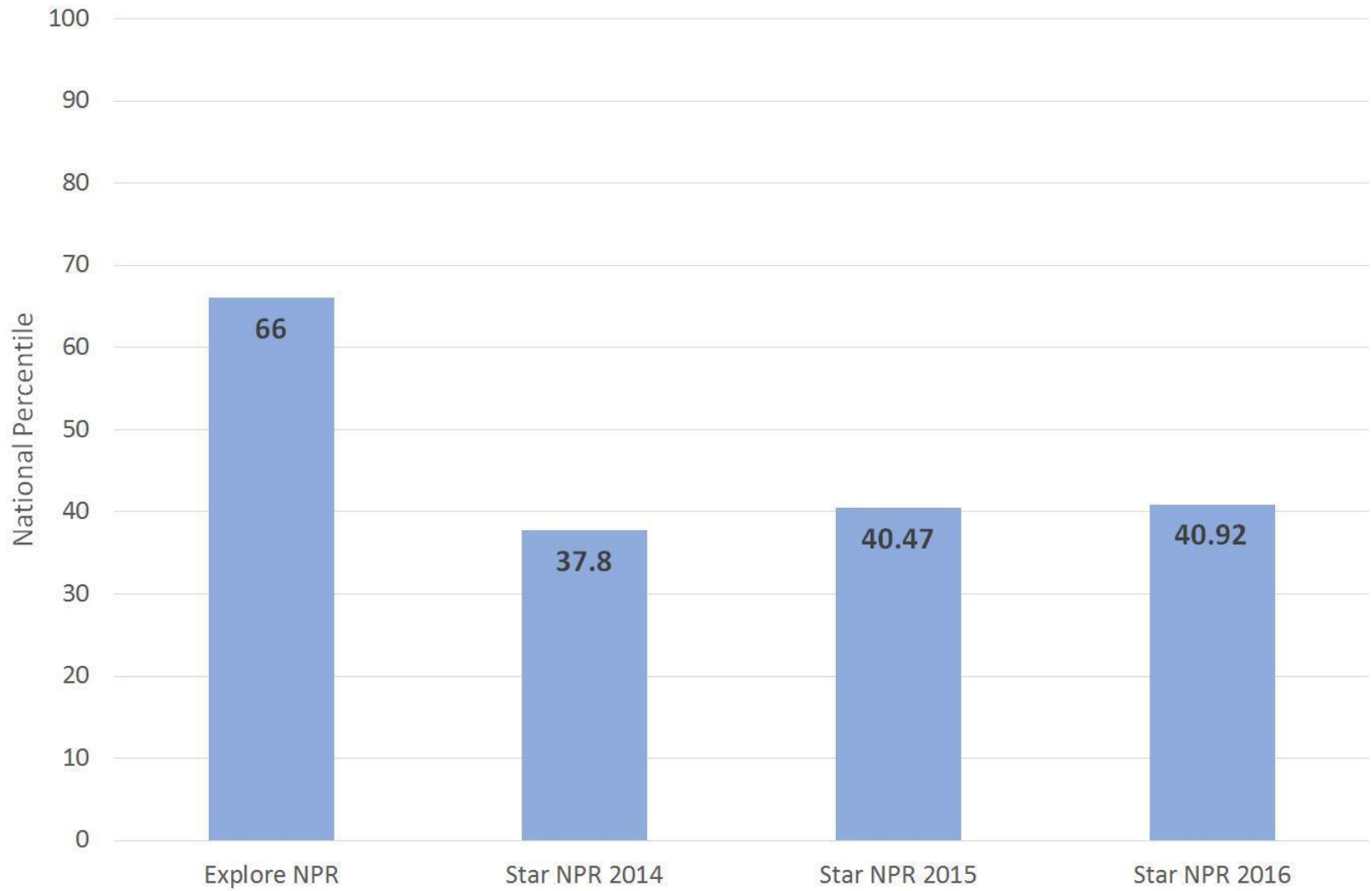
STAR Reading Scale Scores for all Grades



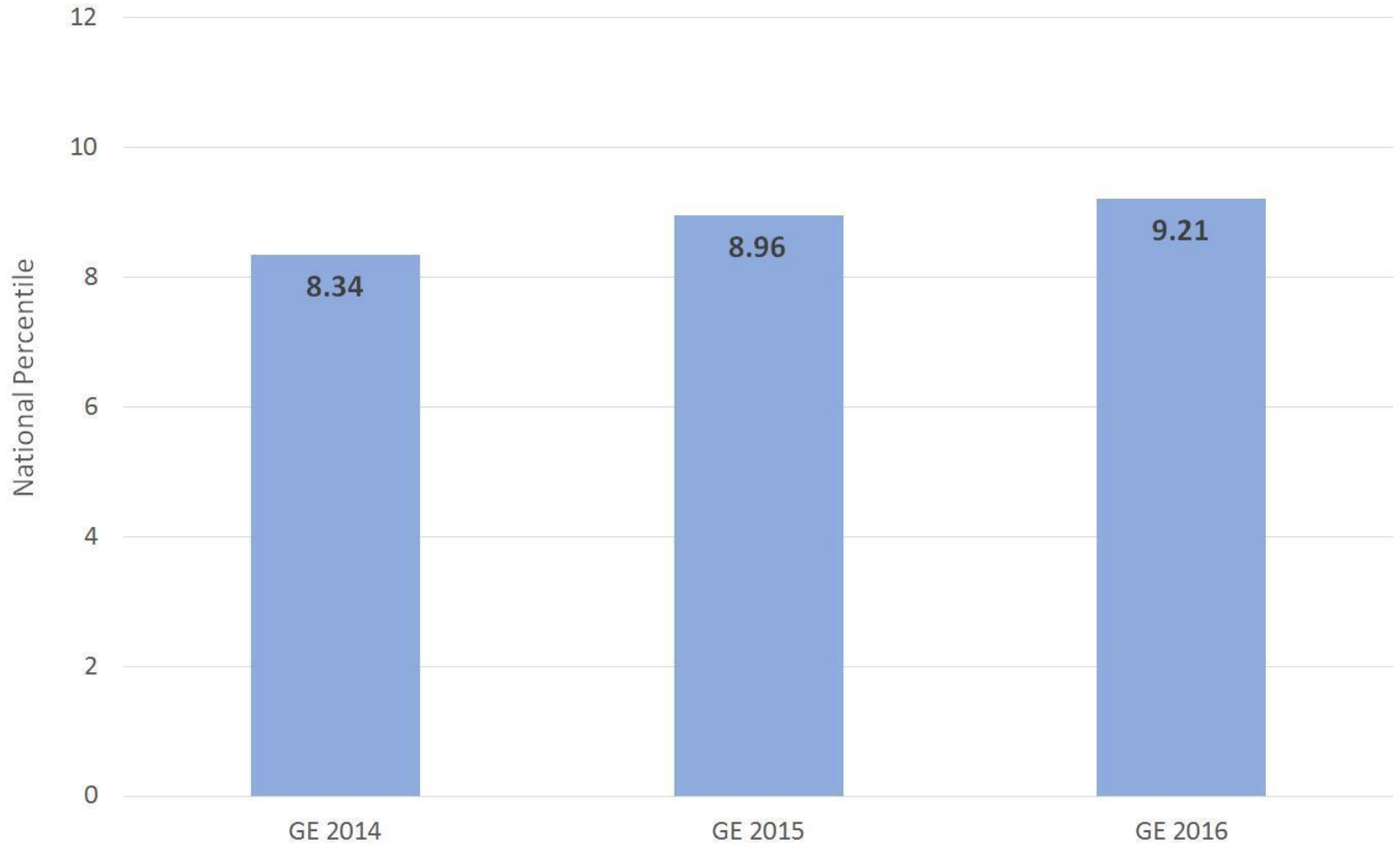
Cutoff

		Frequency	Percent	Valid Percent	Cumulative Percent
Valid	1-At/Above Benchmark	823	50.9	50.9	50.9
	2-Nearing Benchmark	304	18.8	18.8	69.7
	3-Below Benchmark	491	30.3	30.3	100.0
	Total	1618	100.0	100.0	

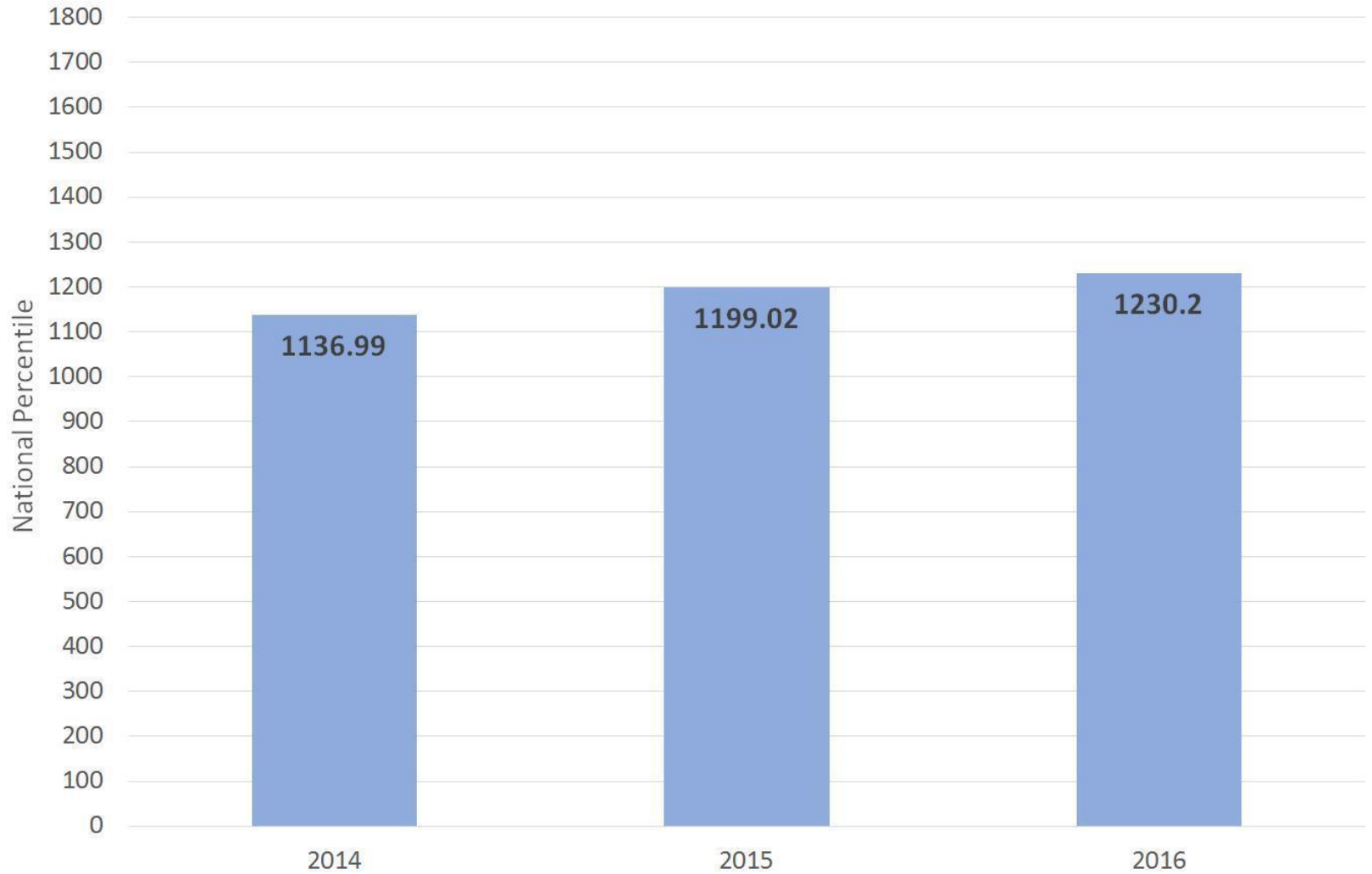
Reading National Percentile by Year Tested (806 Students Tested in 2014, 2015, and 2016)



Reading Grade Level Equivalency by Year Tested (806 Students Tested in 2014, 2015, and 2016)



Lexile Score by Year Tested (806 Students Tested in 2014, 2015, and 2016)

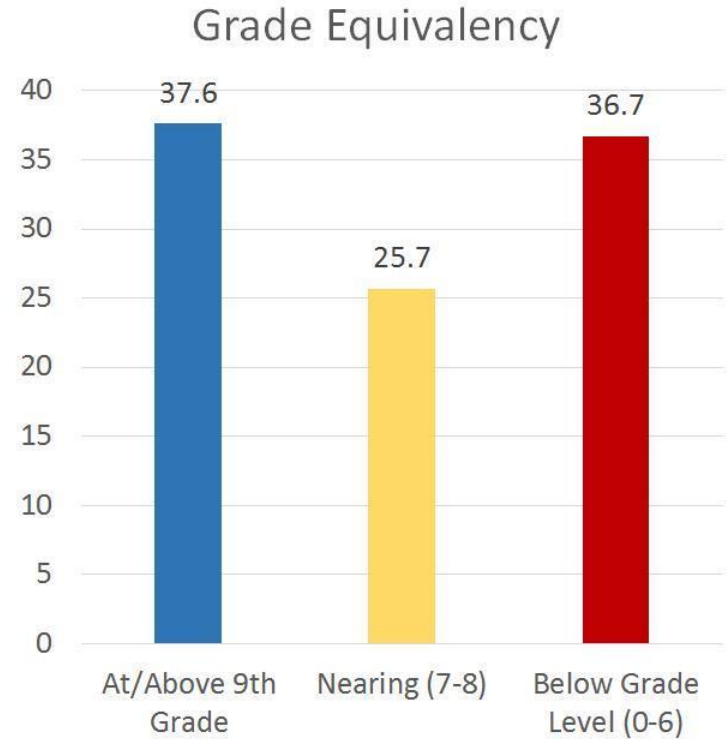
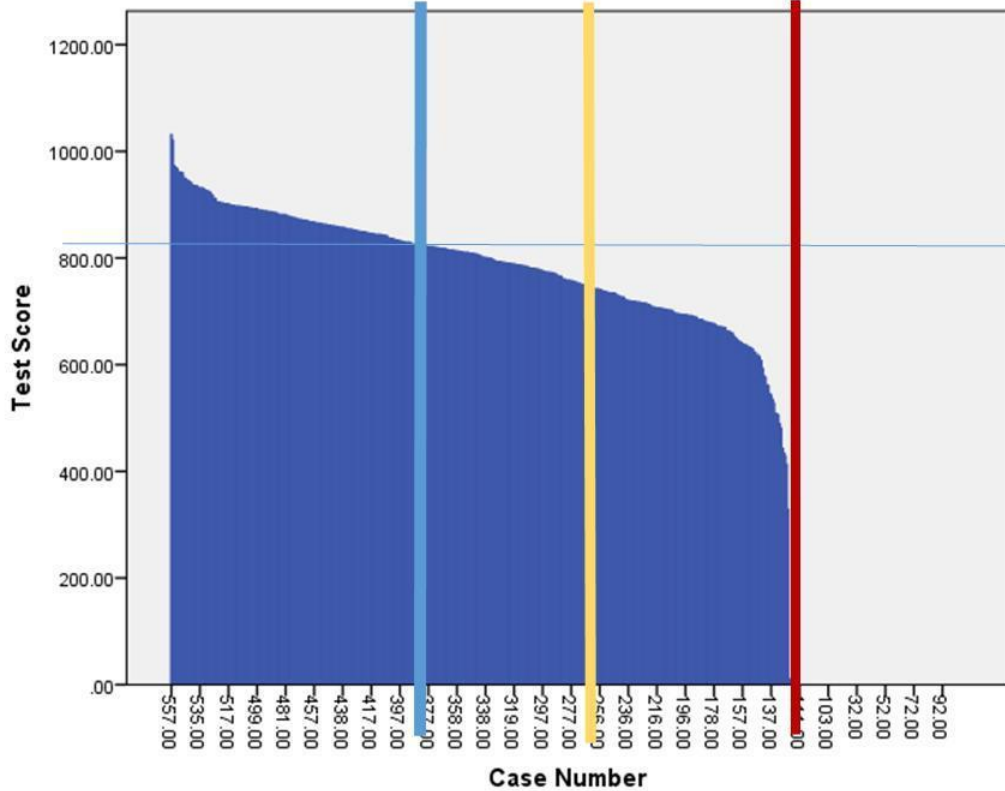


Scale Score by Year Tested (806 Students Tested in 2014, 2015, and 2016)



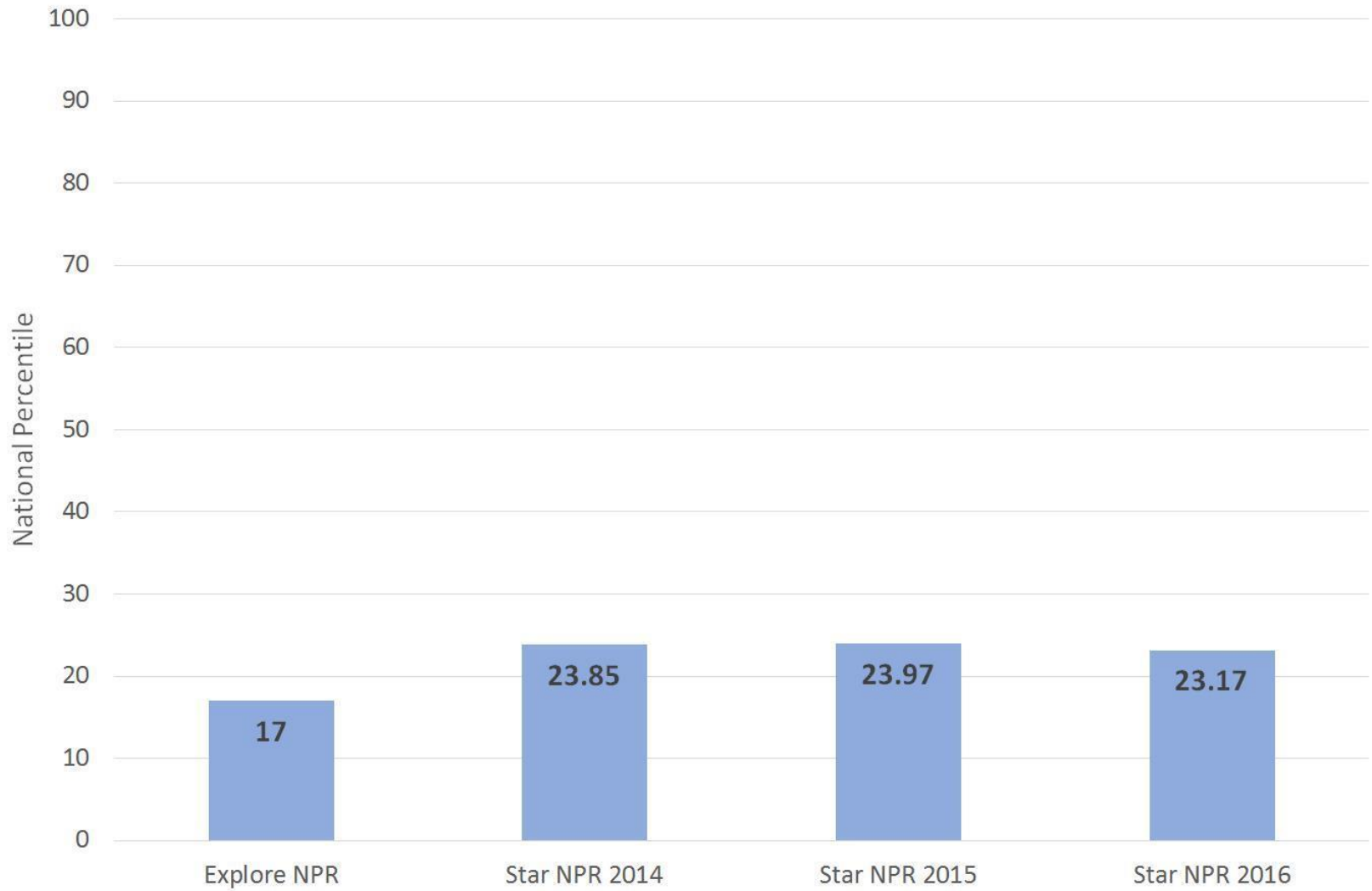
Screening Report – District Grade Equivalency 2015/2016

STAR Math Scale Scores

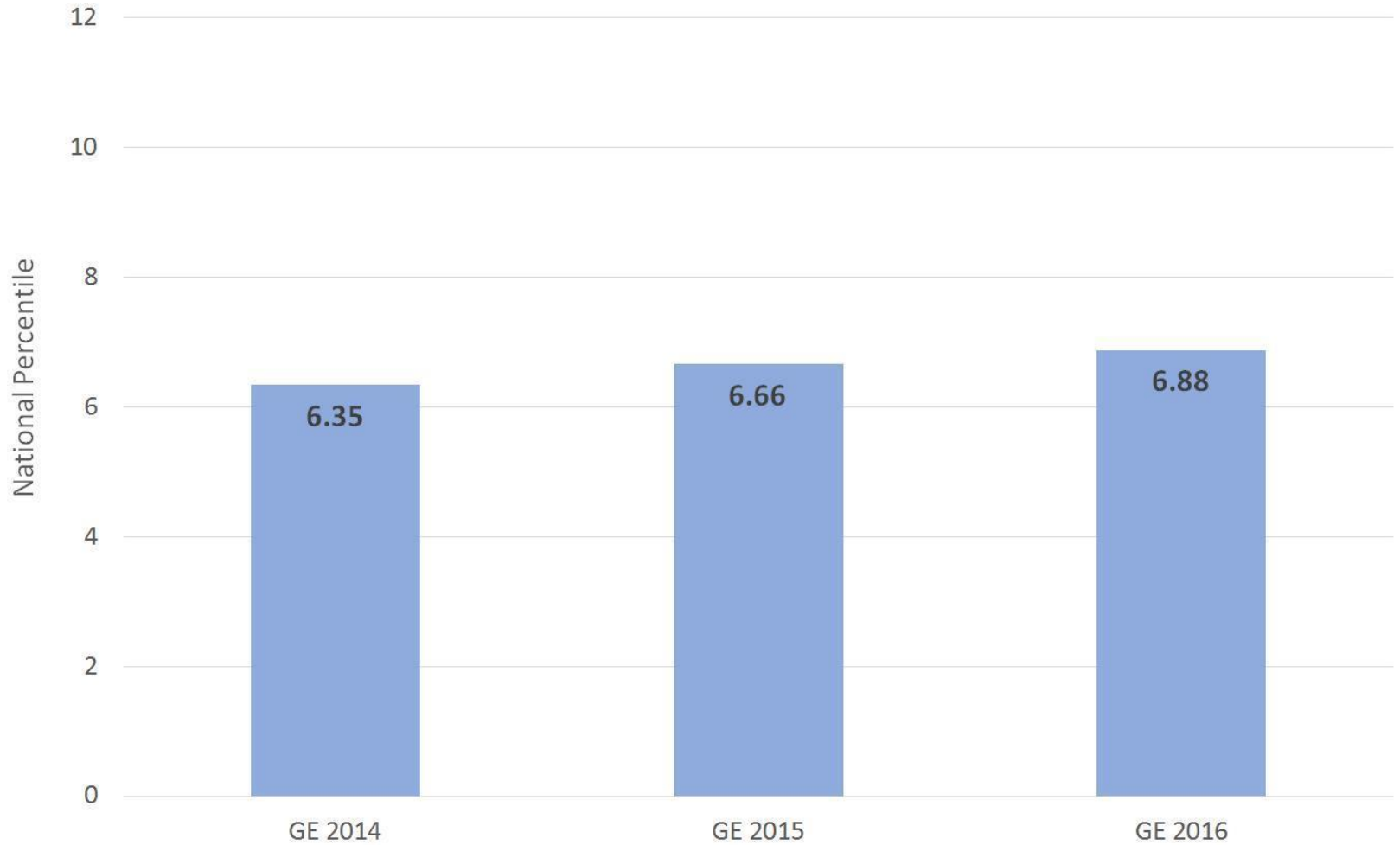


Categories/Levels	Benchmark		Students	
	Scaled Score	Percentile Rank	Number	Percent
At/Above Grade Level (9+)	At/Above 810 SS	At/Above 46 PR	209	37.60%
Nearing Grade Level (7-8)	Below 810 SS	Below 46 PR	143	25.70%
Below Grade Level (6 or Less)	Below 699 SS	Below 20 PR	204	36.70%
Students Tested			556	

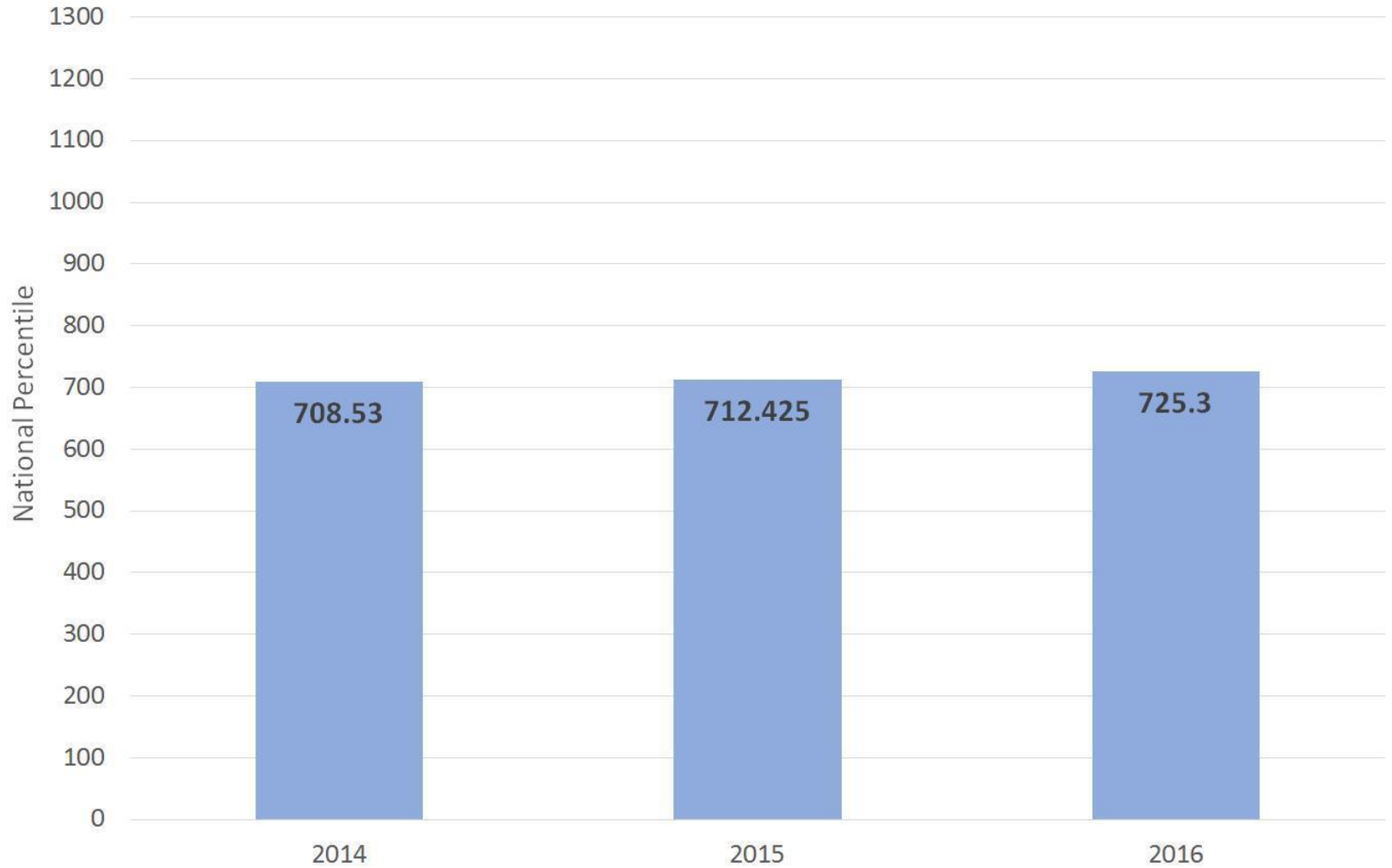
Math National Percentile by Year Tested (806 Students Tested in 2014, 2015, and 2016)



Math Grade Level Equivalency by Year Tested (806 Students Tested in 2014, 2015, and 2016)

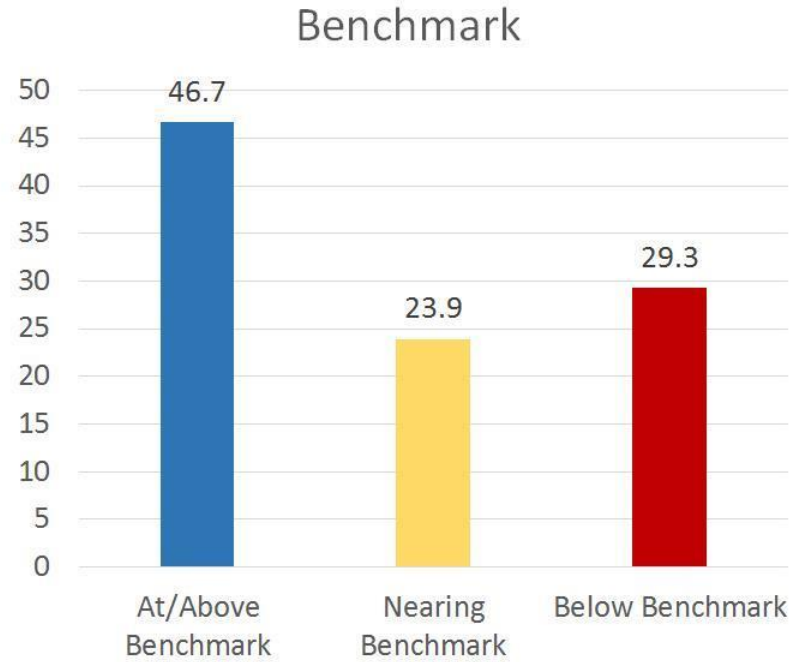
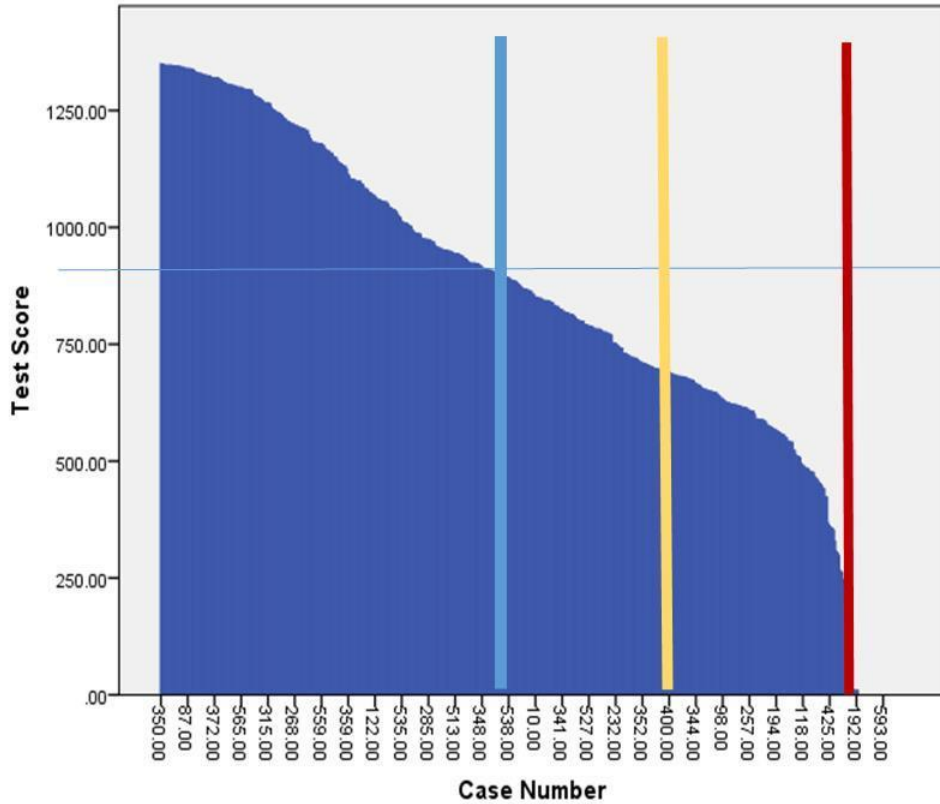


Math Scale Score by Year Tested (806 Students Tested in 2014, 2015, and 2016)



Screening Report – District Benchmark 2015/2016

STAR Reading Scale Scores for Grade 9



Cutoff

		Frequency	Percent	Valid Percent	Cumulative Percent
Valid	1-At/Above Benchmark	244	46.7	46.7	46.7
	2-Nearing Benchmark	125	23.9	23.9	70.7
	3-Below Benchmark	153	29.3	29.3	100.0
	Total	522	100.0	100.0	