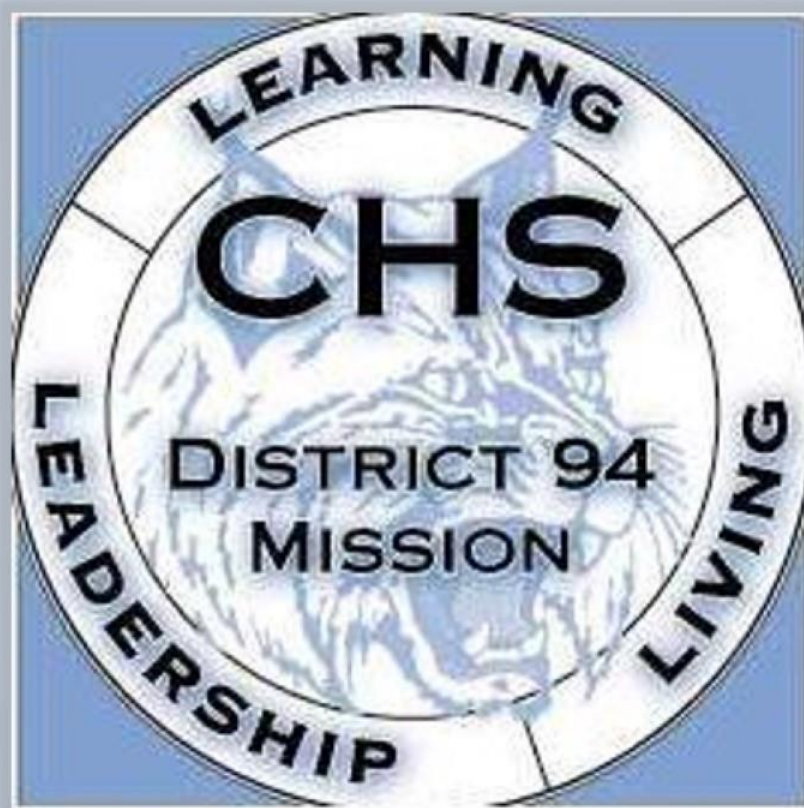


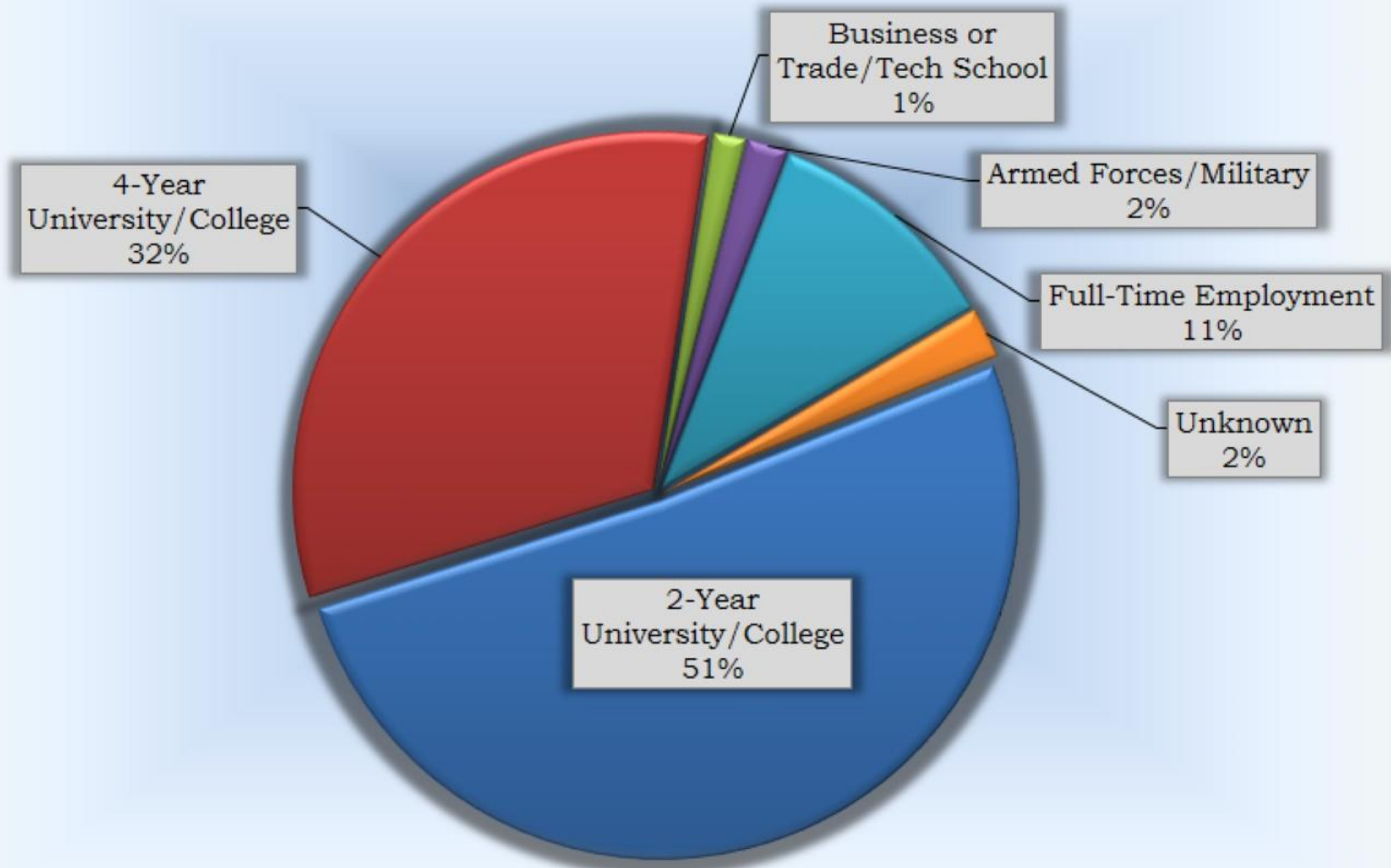
EXIT SURVEY

CLASS OF 2019



Exit Survey 2018-2019

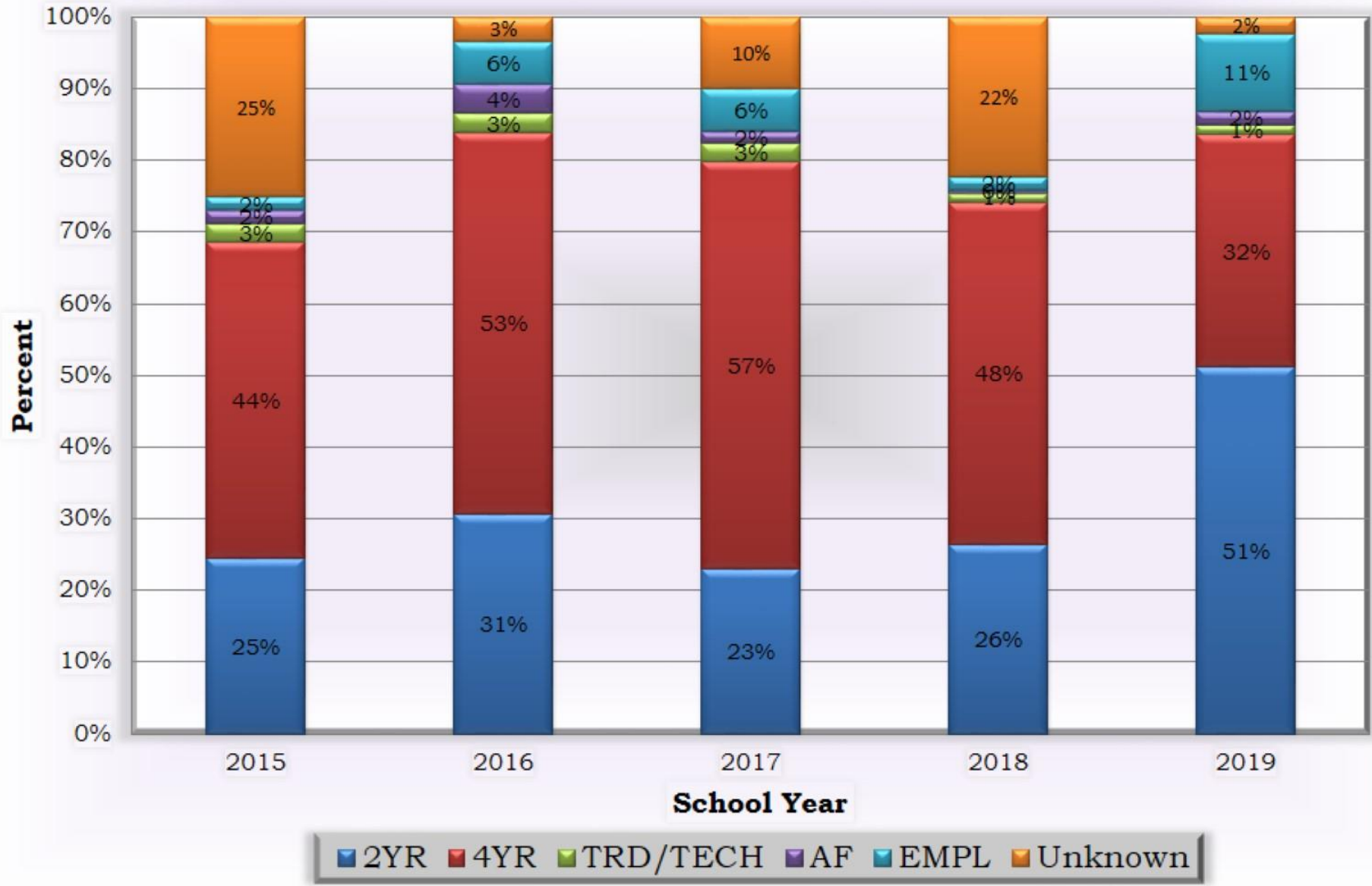
Plans Following Graduation



Exit Survey 2015-2019

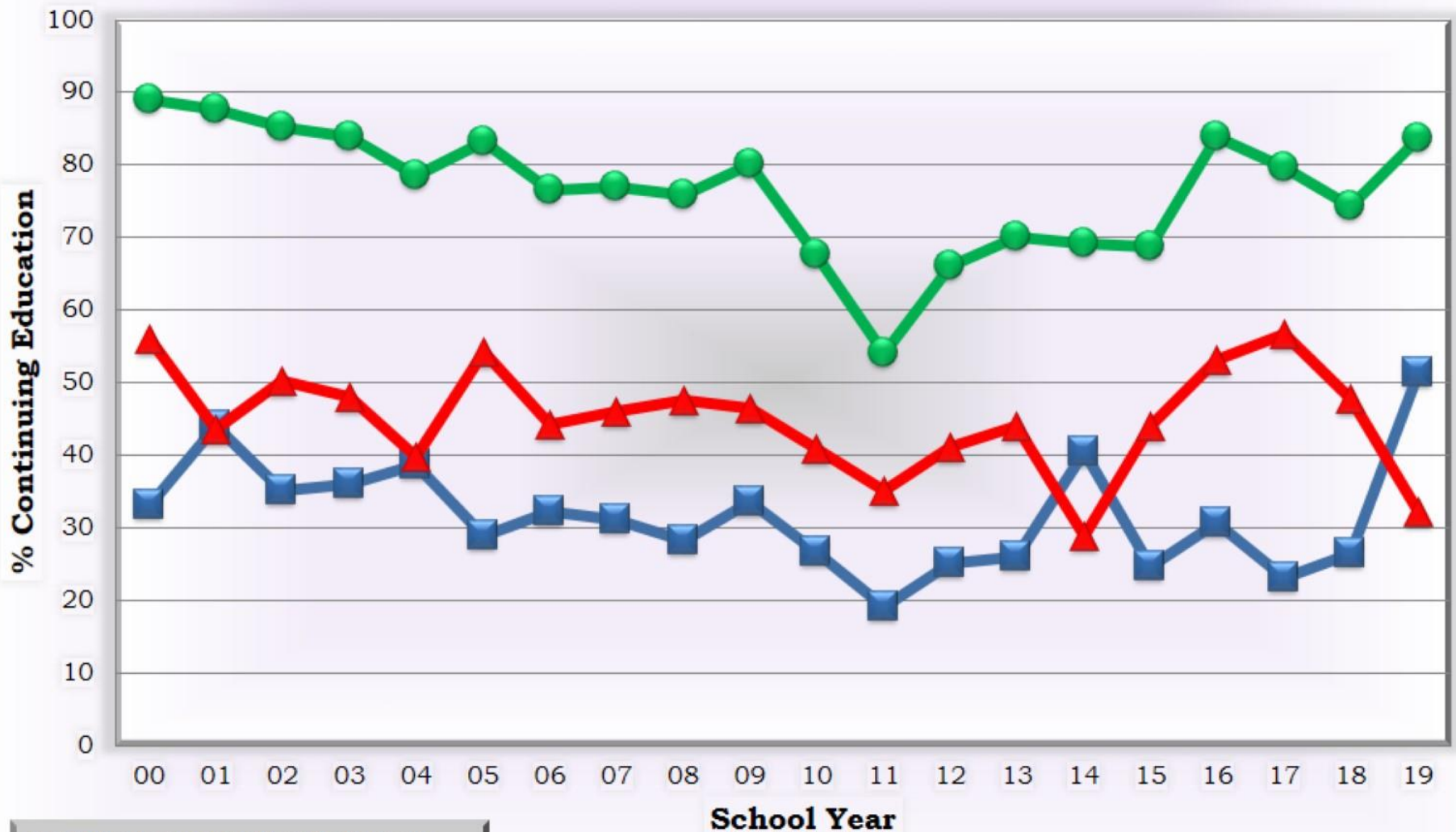
Plans Following Graduation

As of 2016, data was collected from Graduates only. (Prior to 2016, totals were based on entire senior class).



Exit Survey 2000-2019

% of Graduates Continuing Education



As of 2016, data was collected from Graduates only.
 (Prior to 2016, totals were based on entire senior class).

■ 2YR ▲ 4YR ● Total

| College to be Attended | # of Kids | Type | Percent |
|-------------------------------------|-----------|------|---------|
| Brewton-Parker College, GA | 1 | 2Y | 0.2% |
| Central College, IA | 1 | 2Y | 0.2% |
| College of DuPage, IL | 235 | 2Y | 49.0% |
| Elgin Community College, IL | 2 | 2Y | 0.4% |
| Hope College, MI | 1 | 2Y | 0.2% |
| Joliet Junior College, IL | 1 | 2Y | 0.2% |
| Judson University, IL | 1 | 2Y | 0.2% |
| Lake Forest College, IL | 1 | 2Y | 0.2% |
| Moody Bible Institute, IL | 1 | 2Y | 0.2% |
| Robert Morris University, IL | 1 | 2Y | 0.2% |
| Wheaton College, IL | 1 | 2Y | 0.2% |
| Augustana College, IL | 1 | 4Y | 0.2% |
| Aurora University, IL | 23 | 4Y | 4.8% |
| Baylor University, TX | 2 | 4Y | 0.4% |
| Belmont University, TN | 1 | 4Y | 0.2% |
| Benedictine University, IL | 1 | 4Y | 0.2% |
| Boston University, MA | 1 | 4Y | 0.2% |
| Bowling Green University, OH | 1 | 4Y | 0.2% |
| Bradley University, IL | 1 | 4Y | 0.2% |
| CAL Poly State University, CA | 1 | 4Y | 0.2% |
| Calvin College, MI | 1 | 4Y | 0.2% |
| Carthage College, WI | 1 | 4Y | 0.2% |
| Case Western Reserve University, OH | 2 | 4Y | 0.4% |
| Chicago State University, IL | 1 | 4Y | 0.2% |
| Coe College, IA | 1 | 4Y | 0.2% |
| Colorado State University, CO | 1 | 4Y | 0.2% |
| Columbia College, IL | 1 | 4Y | 0.2% |
| Cornell College, IA | 1 | 4Y | 0.2% |
| DePaul University, IL | 3 | 4Y | 0.6% |
| Dominican University, IL | 7 | 4Y | 1.5% |
| Elmhurst College, IL | 3 | 4Y | 0.6% |
| Florida Gulf Coast University, FL | 1 | 4Y | 0.2% |
| Florida State University, FL | 1 | 4Y | 0.2% |
| Illinois State University, IL | 9 | 4Y | 1.9% |
| Indiana State University, IN | 1 | 4Y | 0.2% |
| Iowa State University, IA | 1 | 4Y | 0.2% |
| Johns Hopkins University, MD | 1 | 4Y | 0.2% |
| Lakeland University, WI | 1 | 4Y | 0.2% |
| Lewis University, IL | 2 | 4Y | 0.4% |
| Loras College, IA | 1 | 4Y | 0.2% |
| Loyola, IL | 8 | 4Y | 1.7% |
| Michigan State University, MI | 1 | 4Y | 0.2% |
| Midway University, KY | 1 | 4Y | 0.2% |
| Millikin University, IL | 1 | 4Y | 0.2% |
| National Louis University, IL | 6 | 4Y | 1.3% |

| College to be Attended | # of Kids | Type | Percent |
|---|-----------|------|---------|
| NC State University, NC | 1 | 4Y | 0.2% |
| North Central College, IL | 4 | 4Y | 0.8% |
| North Park University, IL | 1 | 4Y | 0.2% |
| Northern Illinois University, IL | 10 | 4Y | 2.1% |
| Northern Michigan University, MI | 1 | 4Y | 0.2% |
| Philander Smith College, AR | 1 | 4Y | 0.2% |
| Purdue University, IN | 1 | 4Y | 0.2% |
| Roosevelt University, IL | 2 | 4Y | 0.4% |
| Sam Houston State University, TX | 1 | 4Y | 0.2% |
| Southern Illinois University Carbondale, IL | 2 | 4Y | 0.4% |
| St. Ambrose University, IA | 2 | 4Y | 0.4% |
| Texas State University, TX | 1 | 4Y | 0.2% |
| U of AL Birmingham, AL | 1 | 4Y | 0.2% |
| U of Michigan, MI | 1 | 4Y | 0.2% |
| U of Missouri Columbia, MO | 3 | 4Y | 0.6% |
| U of San Diego, CA | 1 | 4Y | 0.2% |
| U of Wisconsin Madison, WI | 1 | 4Y | 0.2% |
| U of Wisconsin Oshkosh, WI | 1 | 4Y | 0.2% |
| U of Wisconsin Stevens Point, WI | 1 | 4Y | 0.2% |
| U of Wisconsin Whitewater, WI | 1 | 4Y | 0.2% |
| University of Florida, FL | 1 | 4Y | 0.2% |
| University of Hawaii Manoa, HI | 1 | 4Y | 0.2% |
| University of Illinois-Chicago, IL | 9 | 4Y | 1.9% |
| University of Illinois, IL | 5 | 4Y | 1.0% |
| University of Iowa, IA | 3 | 4Y | 0.6% |
| University of Missouri-Columbia, MO | 3 | 4Y | 0.6% |
| University of St. Francis, IL | 1 | 4Y | 0.2% |
| University of Wisconsin-Stout, WI | 1 | 4Y | 0.2% |
| Western Illinois University, IL | 2 | 4Y | 0.4% |
| Western Kentucky University, KY | 2 | 4Y | 0.4% |
| Western Michigan University, KY | 1 | 4Y | 0.2% |
| Central DuPage Hospital Project Seach, IL | 1 | TT | 0.2% |
| CIS Endicott International University | 1 | TT | 0.2% |
| Cosmetology and Spa Academy, IL | 1 | TT | 0.2% |
| Paul Mitchell Beauty School, CA | 1 | TT | 0.2% |
| Pellissippi State Tech CC, TN | 1 | TT | 0.2% |
| Rose-Hulman Institute of Technology, IN | 1 | TT | 0.2% |
| Universal Technical Institute, AZ | 1 | TT | 0.2% |
| Army | 1 | A | 0.2% |
| Military | 2 | A | 0.4% |
| Navy | 3 | A | 0.6% |
| United States Marine Corps | 3 | A | 0.6% |
| Working Full Time | 52 | W | 10.8% |
| Unknown | 11 | N/A | 2.3% |